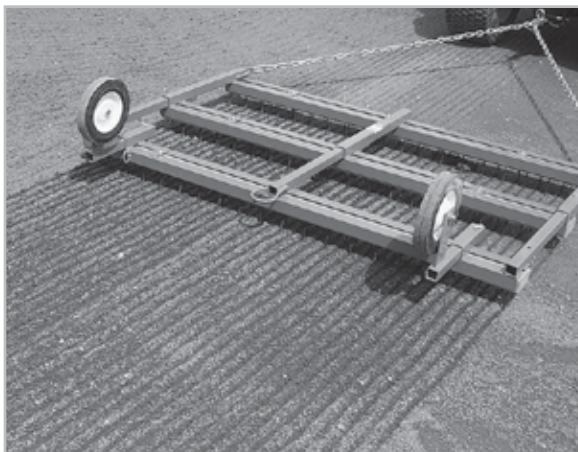


# Premium 5x3 NAIL DRAG

## ASSEMBLY GUIDE



**BEACON**  **ATHLETICS**

# Premium 5x3 NAIL DRAG

Your satisfaction is our ultimate goal. Contact us online at [beaconathletics.com/contact](http://beaconathletics.com/contact) or call 800-747-5985 if you have questions.

## PARTS & HARDWARE

### Frame Kit:

- [2] Steel Frame Pieces
- [3] Plastic Lumber (2" x 4" x 5')
- [125] Nails

### Hardware Pack:

- [8] Hex Head Bolts 3/8" - 16 x 2 1/2"
- [8] 3/8" - 16 Lock Nuts
- [16] 3/8" Flat Washers
- [2] 1/4" Snap Hooks

### Chain Pack:

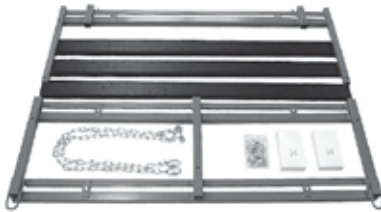
- [1] 10' Tow Chain (1/4")
- [2] 5/16" Quick Links
- [1] 3/16" Quick Link

### Wheel & Tongue Kit:

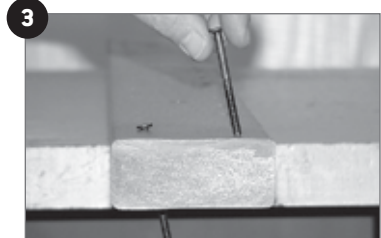
- [2] Wheel Bars
- [1] Towing Bar
- [3] De-dent pins

## ASSEMBLY INSTRUCTIONS

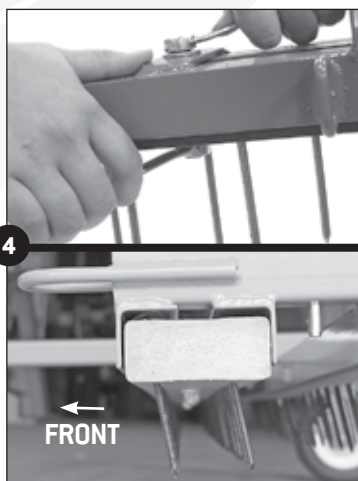
- 1 **Layout and Identify** all parts as described in parts and hardware.



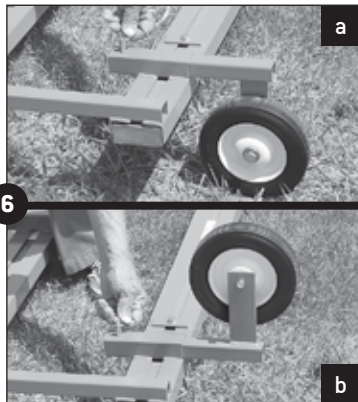
- 2 **Slide the frames together** by inserting the small square tubing into the large square tubing. Align the holes of the frame pieces and insert the hex head bolts through the frame. Use a washer on both ends of the hex bolts and tighten with the locknuts.
- 3 **Position the 2" x 4" lumber** so the **top sticker** is facing up. Use a hammer to tap a nail into each hole. NOTE: the holes are pre-drilled at a 10 degree angle.



- 4** Nestle the lumber into the channels of the frame with the **sticker** pointing toward the front (towing end) of the nail drag. Then, align the holes of the frame with the holes of the lumber and insert a hex head bolt with a washer. Secure it with a washer and lock nut on the end of the bolt. Repeat in all six bolt locations.

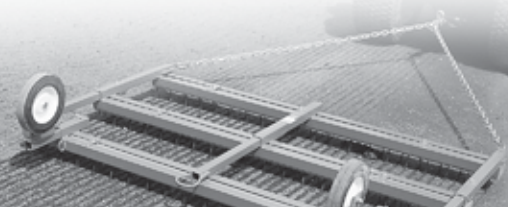
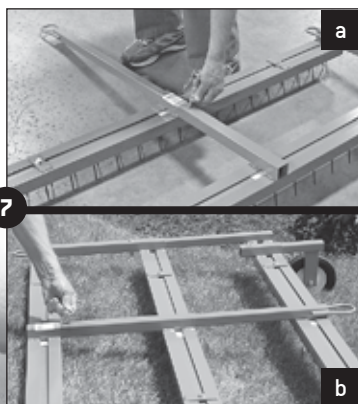


- 5** *[Not pictured]* Attach chain to the main frame loops using the 5/16" quick links that are on each end of the 10' tow chain. Use the two 3/16" quick links to attach a steel mat drag to the back of the nail drag to tackle two jobs in one process on the field.



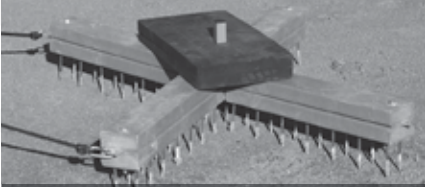
- 6** Add the wheels in the transport position by inserting the stem of each wheel into the rear facing frame tubes. Then, secure them using the de-dent pins (see 6a). To begin dragging, simply invert the wheels and use the pin to secure (see 6b).

- 7** Attach the tongue for transport with the loop end forward and secure it with a de-dent pin (see 7a). When dragging a field, reverse the tongue position and secure with the de-dent pin (see 7b).



Consider these **BEACON BUILT** field maintenance products...

**ADJUSTABLE WEIGHT DRAG SYSTEMS!**



**Beacon X-Drag Field Weight Kit**



**Beacon Adjustable Weight Nail Drag System**

**Get the weight right** with either the Beacon X-Drag Kit Field Kit or Adjustable Weight Nail Drag System. Both allow you to adjust the weight of your drag with Beacon Field Weights. The correct weight depends upon many factors, and field weights will put you in control.

**LEVEL BOARD & SLOPE GAUGE**



**Beacon Level Board**



**Beacon Mound Slope Gauge**

**Improve your efficiency and accuracy** with these tried and true Beacon products. The Level Board lets you cover a much wider area to cut down high spots, making your leveling more effective and the heavy-duty aluminum Mound Slope Gauge gives you an accurate indication of your mound slope.

*Contact us or visit [BeaconAthletics.com](http://BeaconAthletics.com)*

**BEACON ATHLETICS**

**BeaconAthletics.com** | **800-747-5985** | fax 608-836-0724

8233 FORSYTHIA STREET, SUITE 120, MIDDLETON, WI 53562

© Copyright 2018, Beacon Athletics.. All Rights reserved. This material may not be republished, rewritten or redistributed including electronically cached without the prior written consent of Beacon Athletics.

*Version 4 rev.2018-09*